



EOMES Polyclonal Antibody

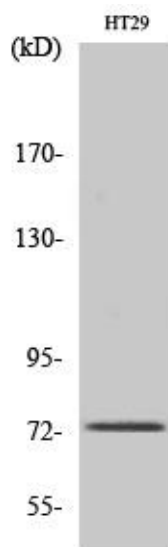
Catalog No	YP-Ab-01696
Isotype	IgG
Reactivity	Human;Mouse
Applications	WB;ELISA
Gene Name	EOMES
Protein Name	Eomesodermin homolog
Immunogen	The antiserum was produced against synthesized peptide derived from human EOMES. AA range:59-108
Specificity	EOMES Polyclonal Antibody detects endogenous levels of EOMES protein.
Formulation	Liquid in PBS containing 50% glycerol, 0.5% BSA and 0.02% sodium azide.
Source	Polyclonal, Rabbit,IgG
Purification	The antibody was affinity-purified from rabbit antiserum by affinity-chromatography using epitope-specific immunogen.
Dilution	Western Blot: 1/500 - 1/2000. ELISA: 1/10000. Not yet tested in other applications.
Concentration	1 mg/ml
Purity	≥90%
Storage Stability	-20°C/1 year
Synonyms	EOMES; TBR2; Eomesodermin homolog; T-box brain protein 2; T-brain-2; TBR-2
Observed Band	73kD
Cell Pathway	Nucleus .
Tissue Specificity	Expressed in CD8+ T-cells.
Function	similarity:Contains 1 T-box DNA-binding domain.,
Background	This gene belongs to the TBR1 (T-box brain protein 1) sub-family of T-box genes that share the common DNA-binding T-box domain. The encoded protein is a transcription factor which is crucial for embryonic development of mesoderm and the central nervous system in vertebrates. The protein may also be necessary for the differentiation of effector CD8+ T cells which are involved in defense against viral infections. A similar gene disrupted in mice is shown to be essential during trophoblast development and gastrulation. Alternative splicing results in multiple transcript variants. [provided by RefSeq, May 2013],
matters needing attention	Avoid repeated freezing and thawing!



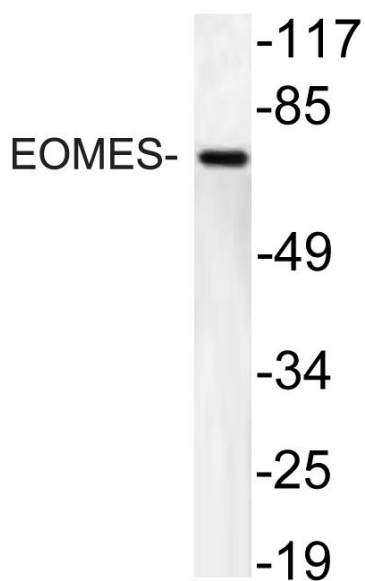
Usage suggestions

This product can be used in immunological reaction related experiments. For more information, please consult technical personnel.

Products Images



Western Blot analysis of various cells using EOMES Polyclonal Antibody cells nucleus extracted by Minute TM Cytoplasmic and Nuclear Fractionation kit (SC-003, Inventbiotech, MN, USA).



Western blot analysis of lysate from HT29 cells, using EOMES antibody.